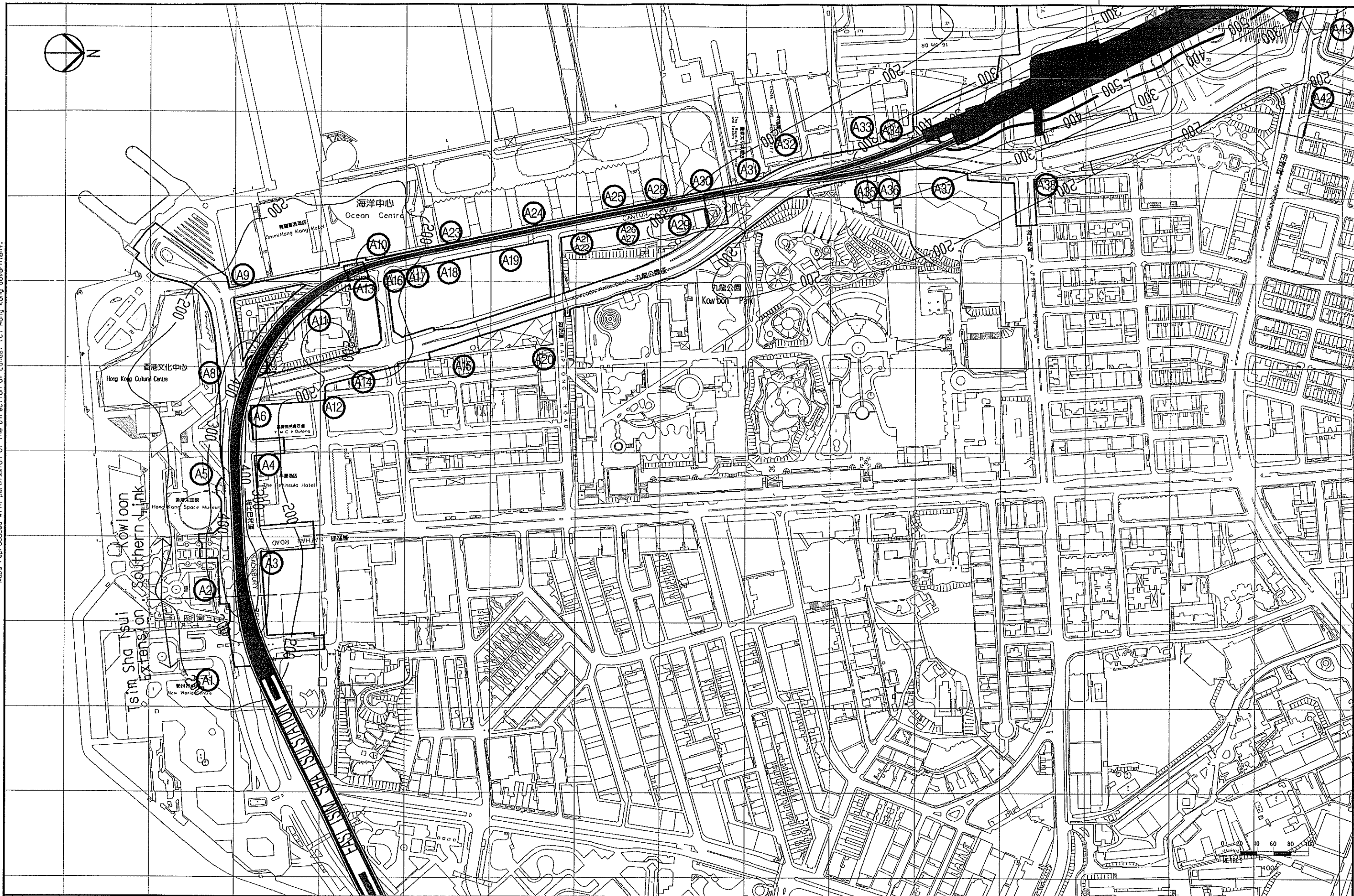


Maps reproduced with permission of The Director of Lands. (C) Hong Kong Government.



REV	DATE	BY	SUB	APP	DESCRIPTION

REV	DATE	BY	SUB	APP	DESCRIPTION

DESIGNED BY	SW
DRAWN BY	RL
CHECKED BY	FC
IN CHARGE	ST
DATE	5 DEC 2003

New Railway Projects

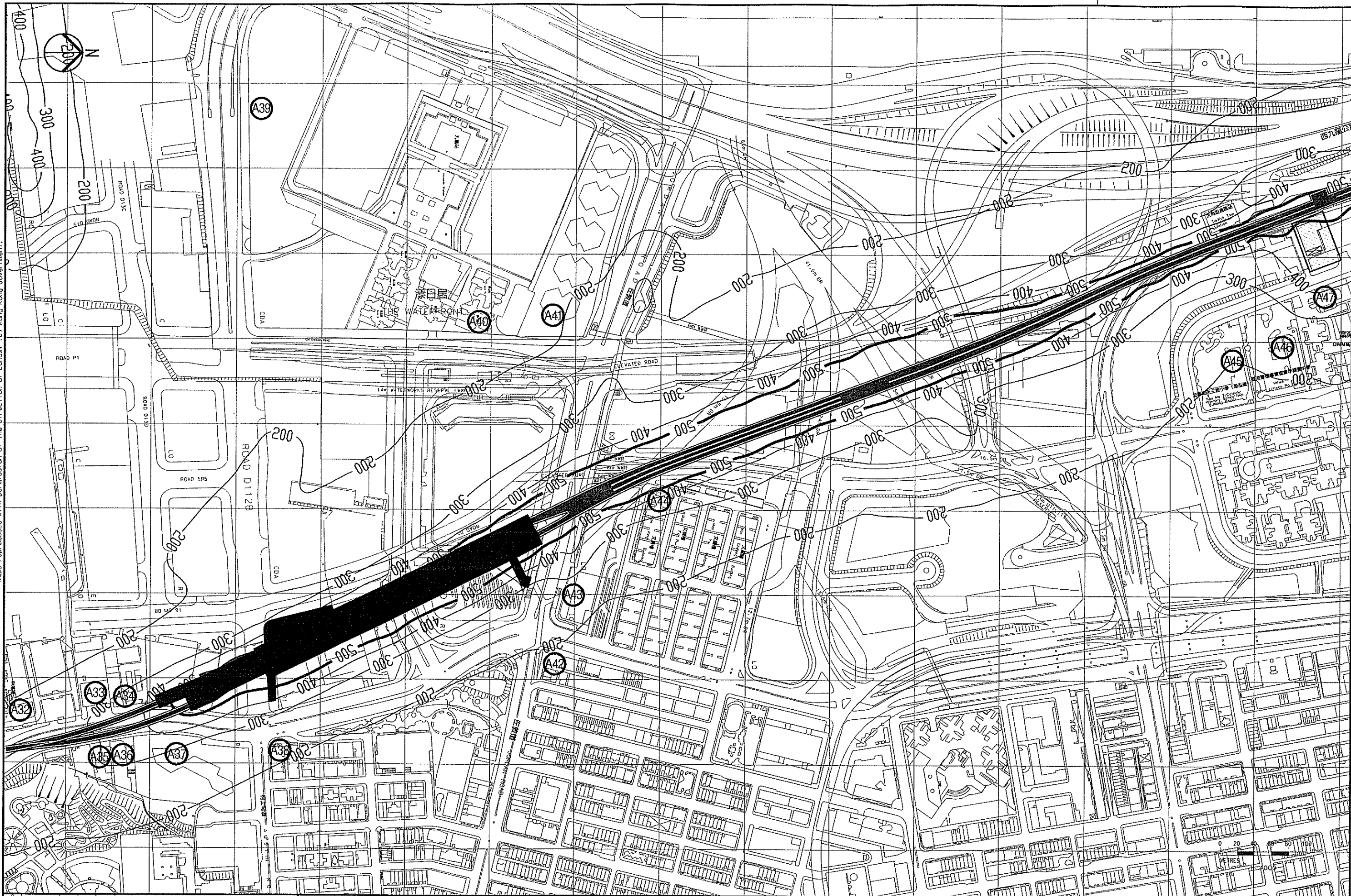
新鐵路策劃

Ove Arup & Partners Hong Kong Limited

KOWLOON SOUTHERN LINK KSL GSA-5100
EIA & ASSOCIATED SERVICES
CONTOUR OF CUMULATIVE 1-HR TSP
CONCENTRATION ($\mu\text{g}/\text{m}^3$)
FOR WORST CASE SCENARIO
AT 1.5m Above Ground (MITIGATED SCENARIO)

CADD FILENAME	CADD DATE
SCALE	1 : 4000 @ A3
DRAWING NUMBER	FIGURE 5-5-1
SHEET NO	1 OF 4
STAGE CODE	P
REV	E

Maps reproduced with permission of The Director of Lands, (C) Hong Kong Government.



REV	DATE	BY	SUB	APP	DESCRIPTION

REV	DATE	BY	SUB	APP	DESCRIPTION

DESIGNED BY	SW
DRAWN BY	RL
CHECKED BY	FC
IN CHARGE	ST
DATE	5 DEC 2003

New Railway Projects

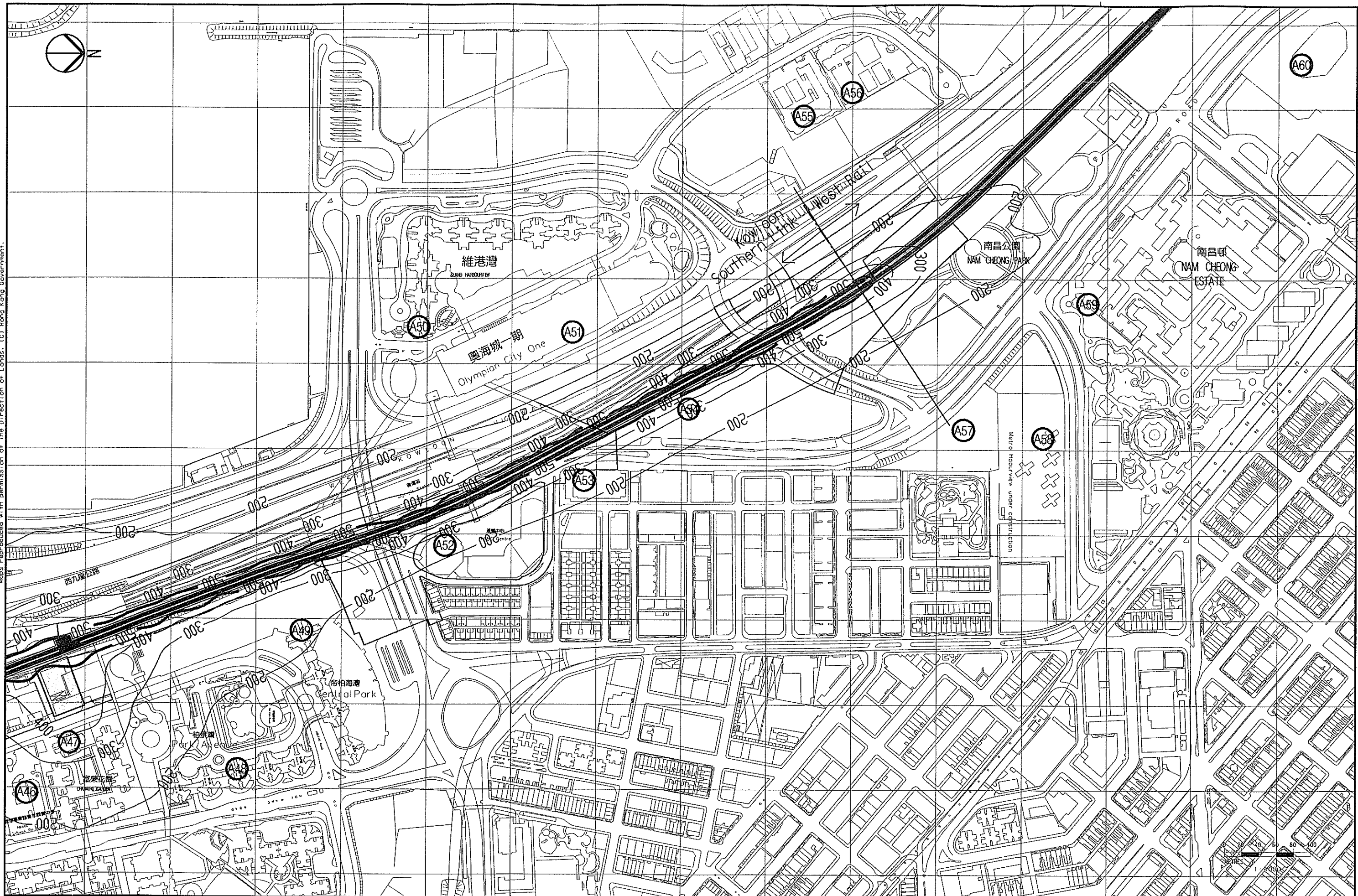
新鐵路策劃

Ove Arup & Partners Hong Kong Limited

KOWLOON SOUTHERN LINK KSL GSA-5100
EIA & ASSOCIATED SERVICES
 CONTOURS OF CUMULATIVE 1-HR TSP
 CONCENTRATION ($\mu\text{g}/\text{m}^3$)
 FOR WORST CASE SCENARIO
 At 1.5m Above Ground (MITIGATED SCENARIO)

CADD FILENAME	CADD DATE
SCALE	1 : 4000 @ A3
DRAWING NUMBER	FIGURE 5-5-2
SHEET NO	2 OF 4
STAGE CODE	P
REV	E

Maps reproduced with permission of The Director of Lands. (C) Hong Kong Government.



REV	DATE	BY	SUB	APP	DESCRIPTION

REV	DATE	BY	SUB	APP	DESCRIPTION
▲	DEC2003	SW	FC	ST	E1A REPORT
▲	NOV2003	SW	FC	ST	E1A REPORT
▲	30MAY2003	SW	FC	ST	E1A REPORT
▲	7MAR2003	SW	FC	ST	E1A REPORT (2ND DRAFT)
▲	11OCT2002	SW	FC	ST	E1A REPORT (1ST DRAFT)

DESIGNED BY SW
 DRAWN BY RL
 CHECKED BY FC
 IN CHARGE ST
 DATE 5 DEC 2003



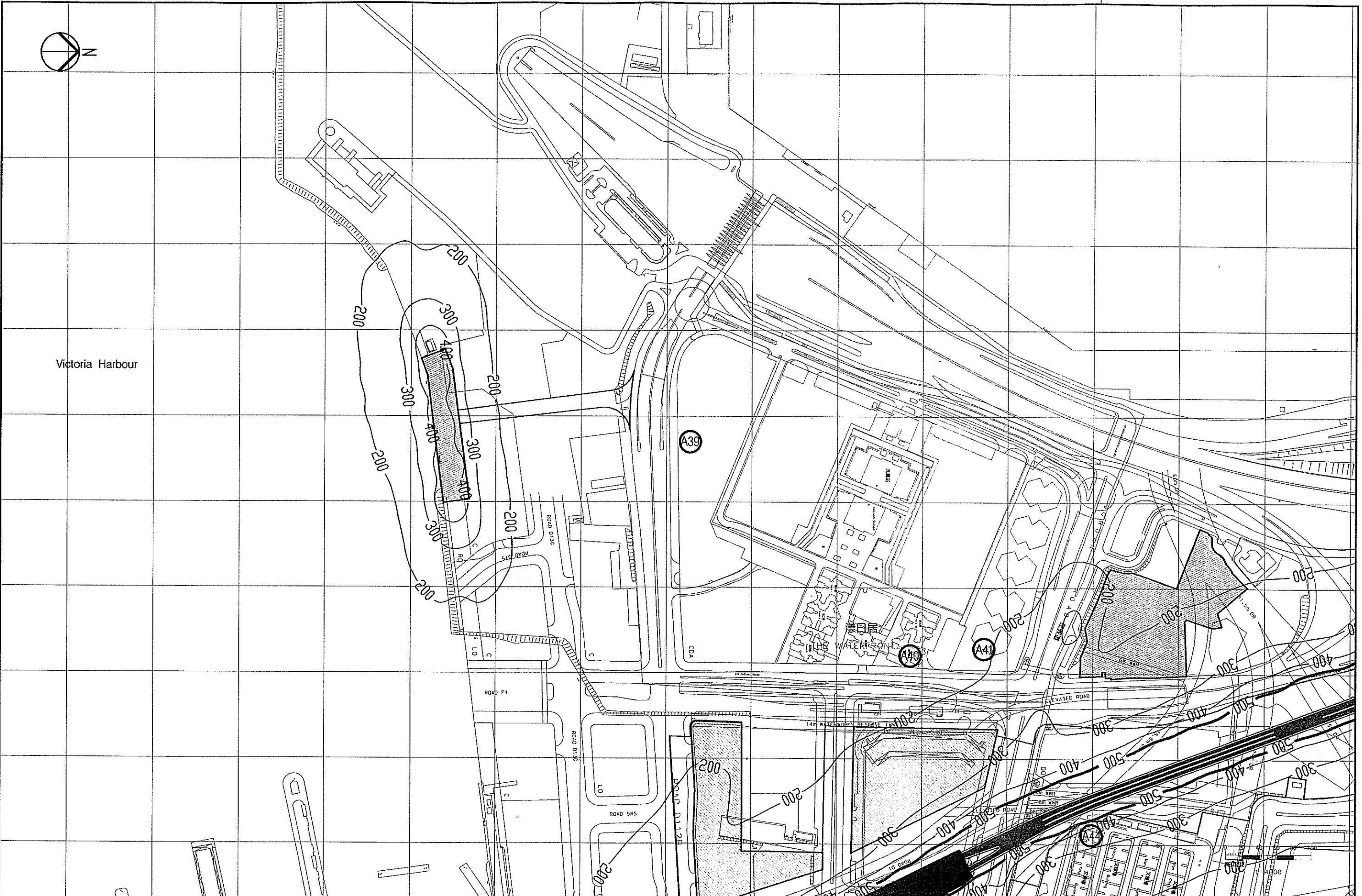
New Railway Projects
新鐵路策劃

Ove Arup & Partners Hong Kong Limited **ARUP**

KOWLOON SOUTHERN LINK KSL GSA-5100
EIA & ASSOCIATED SERVICES
 CONTOURS OF CUMULATIVE 1-HR TSP
 CONCENTRATION ($\mu\text{g}/\text{m}^3$) FOR WORST
 CASE SCENARIO AT
 1.5m ABOVE GROUND (MITIGATED SCENARIO)

CADD FILENAME	CADD DATE
SCALE	1 : 4000 @ A3
DRAWING NUMBER	FIGURE 5-5-3
SHEET NO	3 OF 4
STAGE CODE	P
REV	E

Maps reproduced with permission of The Director of Lands. (C) Hong Kong Government.



REV	DATE	BY	SUB	APP	DESCRIPTION
△	11OCT2002	SW	FC	ST	EIA REPORT (1ST DRAFT)
△	7MAR2003	SW	FC	ST	EIA REPORT (2ND DRAFT)
△	30MAY2003	SW	FC	ST	EIA REPORT
△	NOV2003	SW	FC	ST	EIA REPORT
△	DEC2003	SW	FC	ST	EIA REPORT

DESIGNED BY	SW
DRAWN BY	RL
CHECKED BY	FC
IN CHARGE	ST
DATE	5 DEC 2003


New Railway Projects
 新鐵路策劃

 Ove Arup & Partners Hong Kong Limited

KOWLOON SOUTHERN LINK KSL GSA-5100
EIA & ASSOCIATED SERVICES
CONTOURS OF CUMULATIVE 1-HR TSP
CONCENTRATION (µg/m³) FOR WORST CASE
SCENARIO AT 1.5m ABOVE GROUND
(MITIGATED SCENARIO)

CADD FILENAME	CADD DATE
SCALE	1 : 4000 @ A3
DRAWING NUMBER	FIGURE 5-5-4
SHEET NO	4 OF 4
STAGE CODE	P
REV	E